

Land Measures & Surveying

Land Measures

16 ½ feet	=	25 links	=	1 rod
4 rods	=	66 feet	=	1 chain
80 chains	=	5,280 feet	=	1 mile
43,560 square feet	=	1 acre		
160 square rods	=	1 acre		
10 square chains	=	1 acre		

Land Measure Rule

To find the number of acres in a body of land, multiply the length by the width (in rods) and divide this product by 160. When the opposite sides of the area are unequal but parallel, add them and take half of the sum for the mean length or width.

Example: How many square rods, also acres, in a field 80 rods long and 62 ½ rods wide?

$$80 \times 62 \frac{1}{2} = 5000 \text{ sq. rods}; 5000 \div 160 = 31 \frac{1}{4} \text{ acres}$$

U.S. Government Land Measures

Township = 36 sections, each a mile square

Section = 640 acres

Quarter Section = half a mile square = 160 acres

Eighth Section = half a mile long, north & south, and a quarter of a mile wide = 80 acres

Sixteenth section = a quarter of a mile square = 40 acres

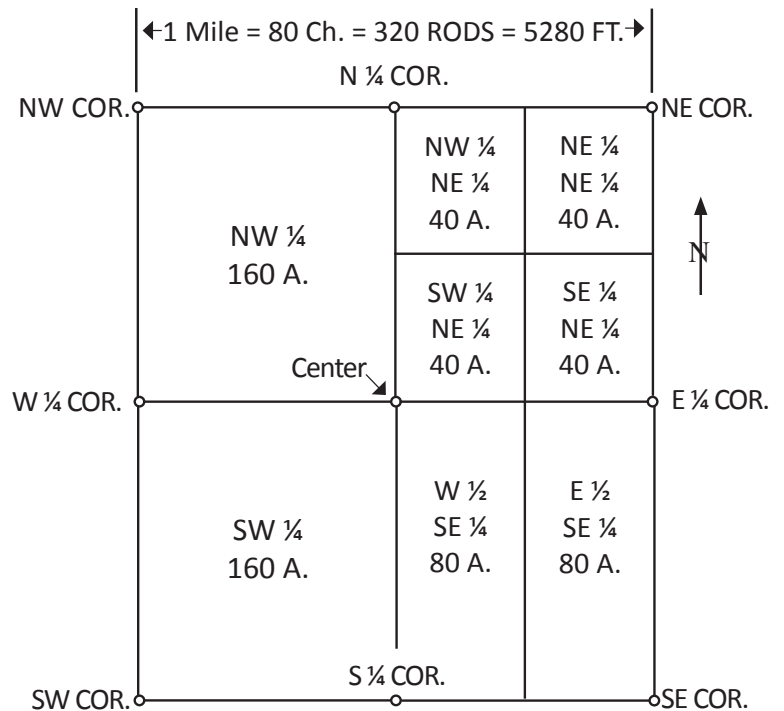
The sections are all numbered 1 to 36, commencing at the northeast corner.

The sections are divided into quarters, which are named by the cardinal points. The quarters are divided in the same way.

Acreage Per Mile of Various Widths

Width	Acres
1 foot.....	0.121
5 feet.....	0.605
8 feet.....	0.968
10 feet.....	1.21
12 feet.....	1.452
14 feet.....	1.694
15 feet.....	1.815
16 feet.....	1.936
18 feet.....	2.178
20 feet.....	2.42
24 feet.....	2.904
25 feet.....	3.025

LAND SURVEY CHART Standard Section = 640 Acres



Township Section Pattern

